

BLUEWATER 40 FIBERGLASS DIESEL TRAWLER

L.O.A. . .39'-4" BEAM. . .13'-0" . . . DRAFT. . .4'-3" DISPLACEMENT. . .32,000#
 Fresh Water Capacity. . .200 gallons Fuel Capacity. . .390 gallons
 Cruising Speed. . .9 knots Range. . .1,000 - 1,200 miles

CONSTRUCTION: Hull-molded, heavy hard layed up, mat & roving laminations with balsa core. Superstructure - wood, fiberglassed over. Decks - fiberglass sandwich construction.

Optional Power Installations

A. Twin G.M. Bedford 330's, 4 cycle, 93 SHP \$5,800 extra
 B. Single Caterpillar 3160 V-8 225 HP \$4,400 extra

Base Price Delivered

ALASKA MODEL
 ACAPULCO MODEL

~~649,900~~

Standard Equipment

Single G.M. Bedford 466 Diesel 150 S.H.P.
 110 v. interior wiring & outlets
 2 ea. 190 A/H 12V. batteries
 Teak interior and exterior trim
 Teak overlaid aft decks
 Teak cabin sole in wheelhouse
 Carpet throughout
 Teak valances in main salon
 12V American Bosch w/wiper
 110V refrigerator
 Edson-type manual bilge pump
 12V horn
 B.J. rubber shaft bearing
 4 burner butane stove with oven
 S.S. stanchions & double lifelines fwd.
 Shut off valves on thru hulls
 2 ea. 5/8" Nylon mooring lines
 2 ea. Par fenders
 30" ships wheel
 H&C pressure water system w/110V H.W. heater
 4 ea. USCG life jackets
 Teak ensign staff
 Emergency tiller
 Shower w/teak grating
 12V engine room blower
 Morse engine controls
 Fuel filter & water separator
 Brass bell
 4" Naugahyde berth cushions

OPTIONAL PRICE LIST EFFECTIVE 4/1/72

Hubbell 110V shore line connector & 50' cable	\$ 86
Automatic 12V bilge pump	118
Yard installed extra F/O or F/W tanks, per gal.	3
Fiberglass drip pan, each engine	90
12V Albina anchor windlass installed	818
12V Simpson-Lawrence Model 519 windlass installed	740
250 ft. 3/8" BBB galv. anchor chain	306
#00 wiring - battery to anchor windlass installed	86
110/12V. refriger., 6.7 cu. ft., in lieu of std. 110V.	395
Engine vibration mounts & flexible coupling complete	240
Automatic engine alarm	35
Teak overlay, forward decks	1,100
Teak T&G overlays on bulkheads	420
Teak sole in pilothouse	264
Teak inlaid sole in forward cabins	310
Teak inlaid sole in salon	205
Teak name boards, port & starboard	90
Fiberglassed plywood weather dodger on foredeck	700
30" S.S. rails around boat deck	385
Acrilan dodger around boat deck	190
35# plow anchor (stows in bow roller)	105
Manifold H.W. heating - engine to F.W. tanks	124
Curved teak doors throughout	385
Boom & tackle to use with mast as a dinghy davit	265
Opening windows - center pilothouse	135
Green marble counter tops in toilet, in lieu of formica	125
Commissioning charge	700

Prices subject to change without notice

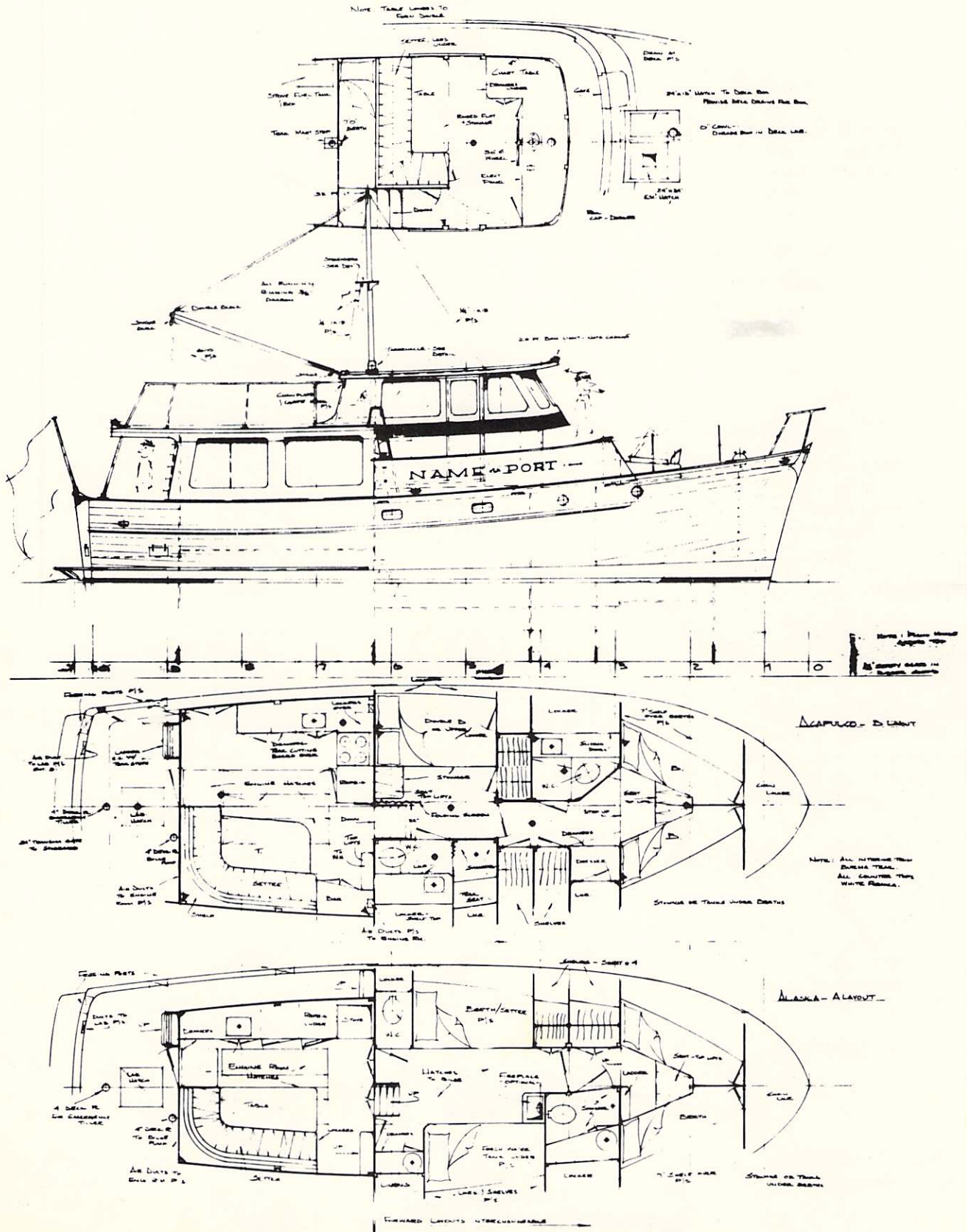
MARIN YACHT SALES, INC.

LICENSED YACHT BROKER
 YACHT SALES & FINANCING

HOME OF THE NEW
 BLUEWATER 40' FIBERGLAS DIESEL TRAWLER

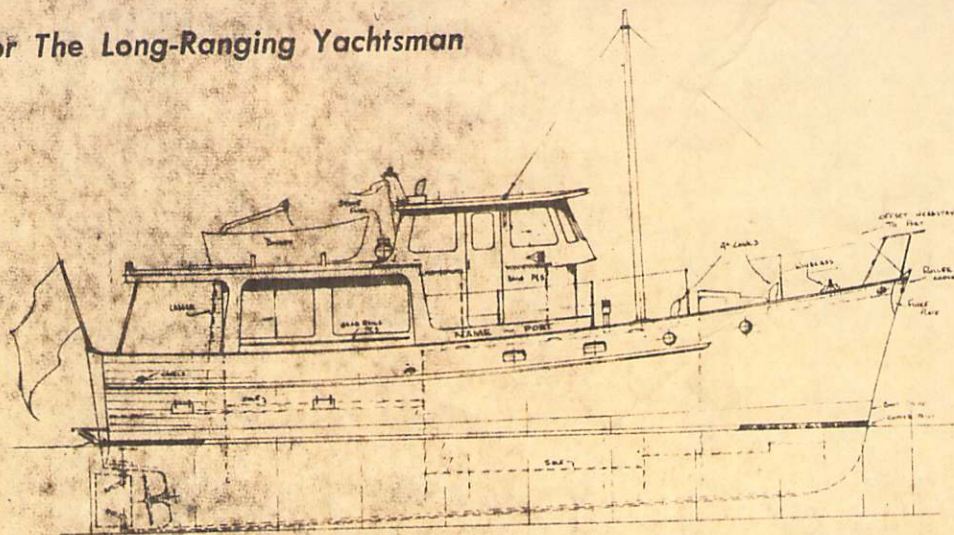
LOWRIE YACHT HARBOR
 40 Pt. San Pedro Road
 San Rafael, Calif. 94901
 Phone: (415) 454-7595

BLUEWATER 40 Fiberglass Trawler Yacht



Bluewater 40 Trawler

For The Long-Ranging Yachtsman



The first two Bluewater 40 trawler yachts have been delivered to their new owners in the San Francisco Bay area. This is a James McPherson design built in fiberglass core construction in Taiwan.

She was designed as a comfortable deep-water vessel with long-range capabilities. Her traditional trawler style offers the deep forefoot, easy run and high flared bow of her relatives which ply the stormy waters of the Aleutian Islands and the North Sea.

Various engine options are offered in single or twin installations, with the goal a reasonable and economical 8½ to 9-knot cruising speed and a standard fuel capacity of 428 gal. in black iron or fiberglass tanks. For the far-ranging yachtsman, extra tankage is available. Her standard tankage gives her a range of 1000 miles and she will be capable of 2000 miles with the additional tankage. She offers a standard fresh water capacity of 200 gal. in stainless steel tanks. Extra water tankage is also offered.

She sleeps seven, utilizing a convertible settee in the salon and a convertible settee in the wheelhouse. This gives her three separate staterooms for cruising privacy. She has two heads, one with a shower.

The heavy fiberglass core construction is reinforced by full-length stringers and bulkheads permanently bonded to the hull. Designer McPherson indicates this forms a structure approximately 20 times stiffer and six times stronger than conventional straight laminate. The deck is molded fiberglass; the

superstructure is fiberglass covered to reduce maintenance.

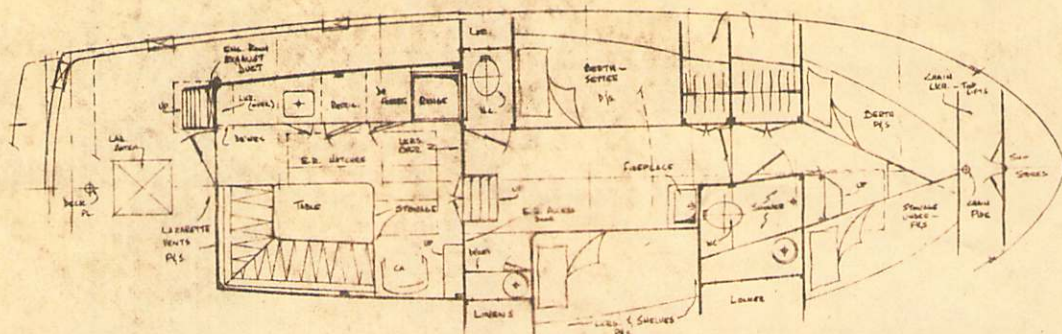
On deck, one is protected from an accidental spill overboard by double lifelines; numerous grab rails are an additional safety factor. All-weather ventilation of the below deck accommodations is provided by cowl ventilators mounted on dorade boxes. A husky anchor roller unit provides an easy means of dropping the hook. The anchor roller unit is designed to provide all-weather storage for the anchor.

The below deck arrangements provide an exceptional amount of stowage space and wide access to the engine room. An additional feature is a sealed hatch in the deckhouse overhead which may be removed to provide easy engine installation or removal.

Designer McPherson comments that he is extremely pleased with her wheelhouse which provides room for the skipper and crew to sit back and watch the action. There is a separate chart table complete with chart drawers located next to the helm as well as shelf space for a complete set of electronics.

She is being imported to the United States by Raccoon Strait Yacht Sales of San Rafael and the exclusive West Coast dealer is Bud Lowrie's Marin Yacht Sales Inc., Foot of Third St., San Rafael, Calif. 94901.

Designer: James McPherson, 340 Rutherford St., No. 92, Goleta, Calif. 93017.



• LOA 39'4" • LWL 36'8" • Beam 13' • Draft 4'3" • Displacement 32,000 lb.

DIESEL YACHT

FOR RACCOON STRAIT YACHT SALES

LOA 39'4" LWL 36'8"

BEAM 13'0" DRAFT 4'3"

PROFILE & PLAN

SHEET #10 HULL #054

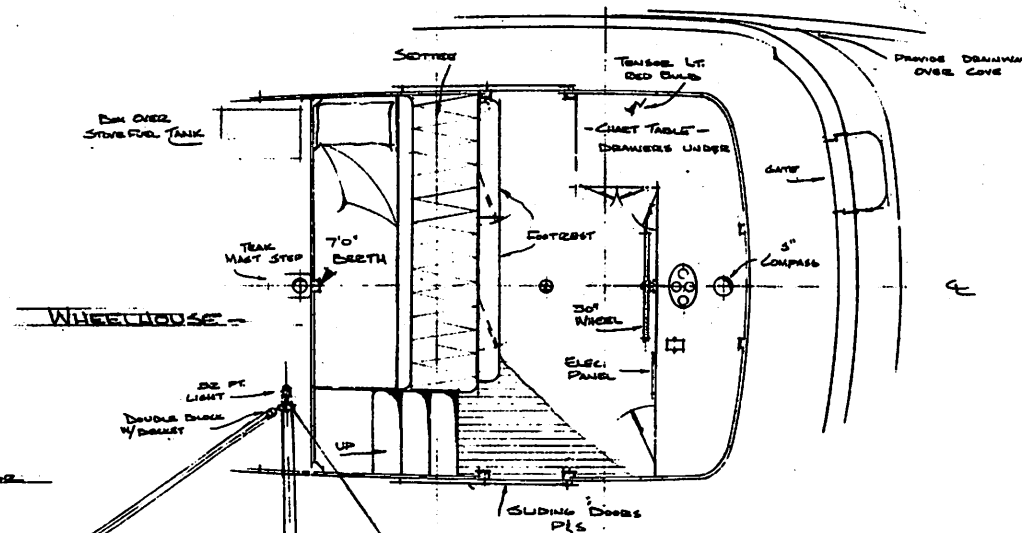
SCALE 1/2"=1'0" DATE DEC 70

JAMES McPHERSON

NAVAL ARCHITECT

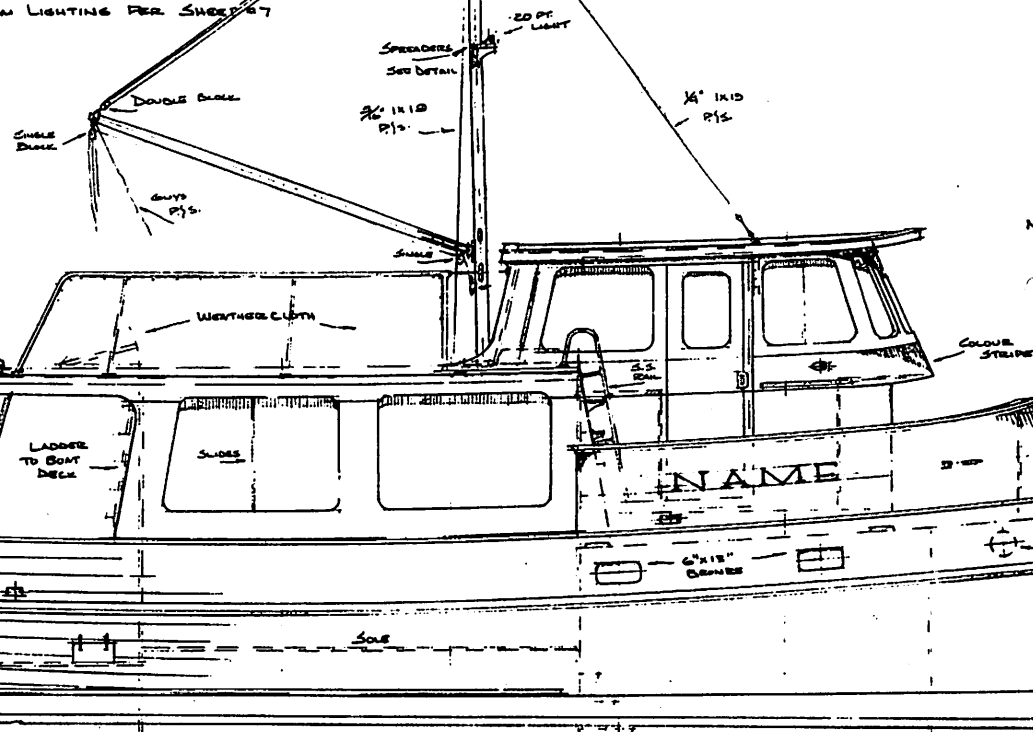


5



LIGHT SCHEDULING - INTERIOR
 ▲ - SWIVEL BASE FIXTURES
 ◆ - DOME FIXTURES
 ✓ - TENSOR LT. - CHART. T. ONLY
 ENGINE ROOM LIGHTING PER SHEET 07

NOTE: ALL RUNNING RIGGING 3/8" DIAGONAL.



NOTE: COLOUR STRIPE EXTENDS FROM FORD END WHEELHOUSE TO AFT END COCKPIT OVERHANG
 7" WIDE - SALON
 10" - WHEELHOUSE

GMC. BEDFORD 400 DIESEL
 150 D.H.P. 2411 R.P.M.

3 10 9 8 7 6 5 4 3 2 1 0