

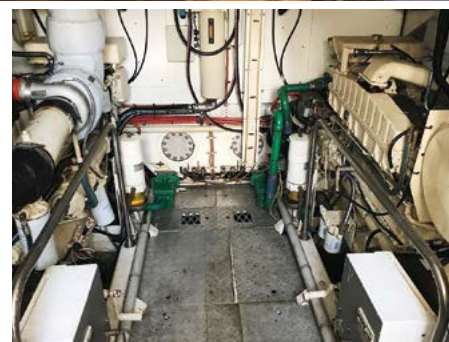
ONLINE AUCTION

Commences Saturday 1st December 2018 and will end on Wednesday 5th December at 2pm AEST.

1992 78FT NORMAN WRIGHT MOTOR YACHT "ANNABELLE"

LOCATED IN AIRLIE BEACH

MUST BE SOLD



- LOA 22.89m • Beam 5.3m • Draft 1.7m
- Powered by Twin Cummins MTA 885-M h/X 350HP 6 Cylinder Engines
- Hydraulic Bow Thruster
- Naiad Hydraulic Stabilizers
- 11,400 Fuel Capacity in 4 Tanks
- 2,000 Litres Water Capacity in 4 Tanks
- Full Electronics

- 6kva Diecon Generator
- 20kva Seawasp Generator
- Construction Moulded Timber
- Hull Material Queensland Maple
- Accommodation for 7 in 3 Single Berths and 2 Double Berths
- 3 Toilets and 3 Showers
- Full Galley

- 2 Desalinators
- Full detail has just been completed
- The vessel has sustained structural damage to the hull, keel and mechanical systems
- Prior to relocation the appropriate Authorities need to be contacted
- Vessel has been submerged
- Engine preservation immediately post recovery

TERMS • Buyer's Premium of 7.5% excluding GST applies to this sale.
• 10% deposit and balance to be paid in full at settlement on or before 12th December 2018. • The vessel will be sold "As Is" and in its current condition.
• Located at Edges Boat Yard, Airlie Beach, Qld Australia.

Disclaimer: Marine Auctions offers the details of this vessel in good faith but cannot guarantee or warrant the accuracy of this information nor warrant the condition of the vessel. As the vessel is sold "As Is Where Is" Marine Auctions highly recommends that every potential purchaser inspect or arrange a surveyor or representative on their behalf to inspect the vessel prior to bidding.

**MARINE
ONLINE
AUCTIONS**

Active Results
World Wide

MARINE AUCTIONS & VALUATIONS

For full specifications & inspections please call

Adrian Seiffert 0418 783 358

Email: adrian@marineauctions.com.au

WWW.MARINEAUCTIONS.COM.AU