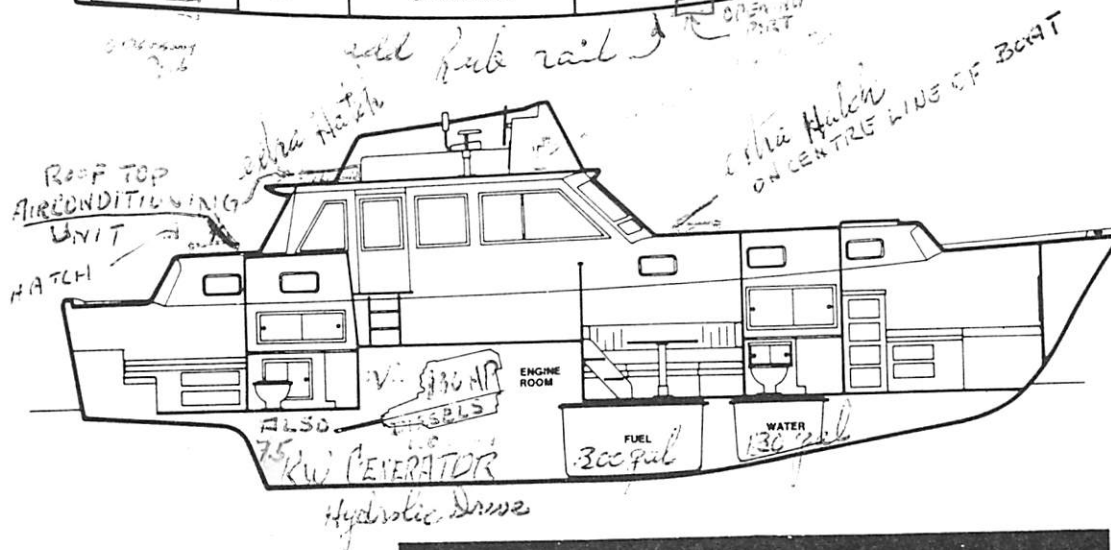
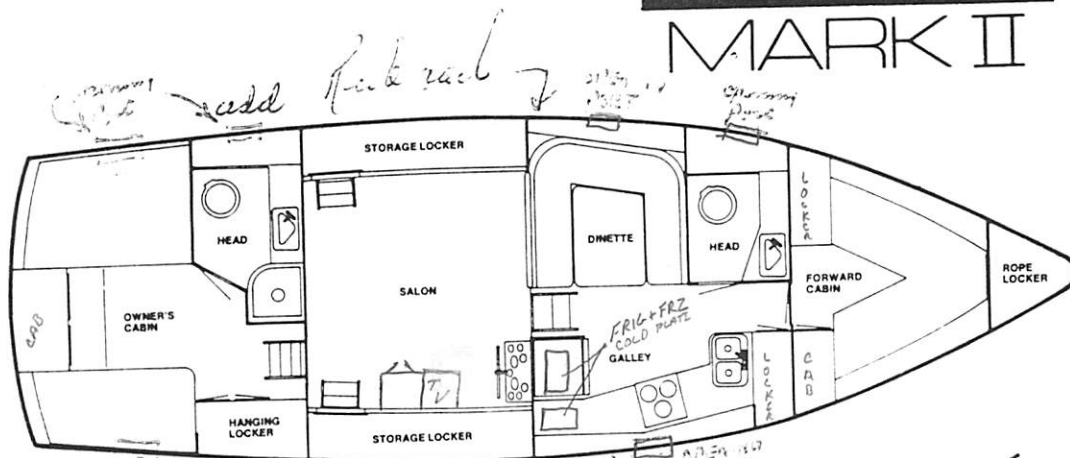


Holding tank? Yes

GULFSTAR

43

MARK II



SPECIFICATIONS

(*Extras supplied and installed by

B.M.

Length Over all	43'4"
Designed Water Line	39'2"
Beam	13'11"
Draft	3' 6"
Freeboard Forward	5'10"
Freeboard Aft	4' 6"
Headroom Thru-out	6' 4"
Fresh Water Capacity	130 gallons
Fuel Capacity	300 gallons
Displacement (approximately)	21,000 pounds
Height Above Water line	12'0"
to the top of Flying Bridge	

1973 Gulfstar Mark I Trawler

Great live-a-board! Ready for economical cruising anywhere - Twin 130 hp Perkins Diesels, 1800 hrs - Onan 7.5 kw Genset - Interior refit with new upholstery 98/99 - 2 Staterooms, 1 1/2 baths, electric heads - Hot water heater - Anchor winch - Oil pump out system - A/C - Stove - 2 VHF's - Loran - Auto pilot - 2 depth sounders - 20" color TV - Full galley down

\$64,500 O.B.O. (561) 625-4958 or email

macjic@aol.com

43 FT.

CALL (561) 308-7844

