



FIG. 15 ALTERNATOR ASSEMBLY EXTERNAL REGULATOR

QUANTITY  
305 350

ITEM	PART NO.	DESCRIPTION	RH	LH	RH	LH
1	39000	NUT	1	1	1	1
2	39001	WASHER	1	1	1	1
3	39039	PULLEY	1	1	1	1
4	707348	FAN	1	1	1	1
5	39005	SPACER	1	1	1	1
6	39006	NUT SQUARE # 10 - 32	4	4	4	4
7	39034	HOUSING, FRONT	1	1	1	1
8	39008	BEARING	2	2	2	2
9	39009	RETAINER, FRONT BEARING	1	1	1	1
10	39010	KEY	1	1	1	1
11	39035	ROTOR ASS'Y	1	1	1	1
12	39012	SLIP RING ASS'Y	1	1	1	1
13	39013	SCREW # 10 - 32 x 5/8"	1	1	1	1
14	39046	STATOR ASS'Y (50 AMP.)	1	1	1	1
15	39015	NEGATIVE DIODE ASS'Y	1	1	1	1
16	39016	POSITIVE DIODE ASS'Y	1	1	1	1
17	39017	WASHER	6	6	6	6
18	39018	INSULATOR	2	2	2	2
19	39019	RETAINER, REAR BEARING	1	1	1	1
20	39020	HOUSING, REAR	1	1	1	1
21	39027	SCREW # 10 - 32 x 3 1/8	4	4	4	4
22	39022	BRUSH ASS'Y	1	1	1	1
23	39045	DUAL ISOLATION DIODE ASS'Y	1	1	1	1
24	39024	INSULATOR	1	1	1	1
25	39025	BOLT # 10 - 24 x 3/4"	1	1	1	1



FIG. 15 ALTERNATOR ASSEMBLY EXTERNAL REGULATOR

QUANTITY

305

350

ITEM	PART NO.	DESCRIPTION	RH	LH	RH	LH
26	39026	WIRE ASS'Y	1	1	1	1
27	39027	WASHER	1	1	1	1
28	39028	INSULATOR	1	1	1	1
29	39029	NUT, SELF LOCKING #10 - 24	9	9	9	9
30	39030	COVER REAR HOUSING	1	1	1	1
31	39031	SCREW, SELF TAPING # 8 x 3/4"	2	2	2	2
32	39032	INSULATOR	1	1	1	1
33	39033	SCREW, SELF TAPING # 8 x 1/2"	2	2	2	2
34	707340	ALTERNATOR ASS'Y	1	1	1	1
35	725048	HARNES	1	1	1	1
36	103343	WASHER FLAT 1/2"	1	1	1	1
37	179893	BOLT 1/2 - 13 x 3"	1	1	1	1
38	103325	WASHER 1/2" LOCK	1	1	1	1
39	102637	NUT 1/2 - 13	1	1	1	1
40	97061	STRAP, ALTERNATOR ADJUSTING	1	1	1	1
41	179837	BOLT 3/8 - 16 x 3/4"	1	1	1	1
42	103321	WASHER 3/8" LOCK	1	1	1	1
43	179816	BOLT 5/16 - 18 x 3/4	1	1	1	1
44	20523	WASHER SPECIAL	1	1	1	1
45	103320	WASHER 5/16 LOCK	1	1	1	1
46	39040	GASKET REAR HOUSING	1	1	1	1
47	707341	VOLTAGE REGULATOR ASS'Y	1	1	1	1
48	106497	WASHER #10 LOCK	3	3	3	3
49	436586	SCREW #10 - 32 x 3/8"	3	3	3	3
50	725035	BRACKET, VOLTAGE REGULATOR MFG.	1	1	1	1



# MARINE ENGINES



## PARTS CATALOG

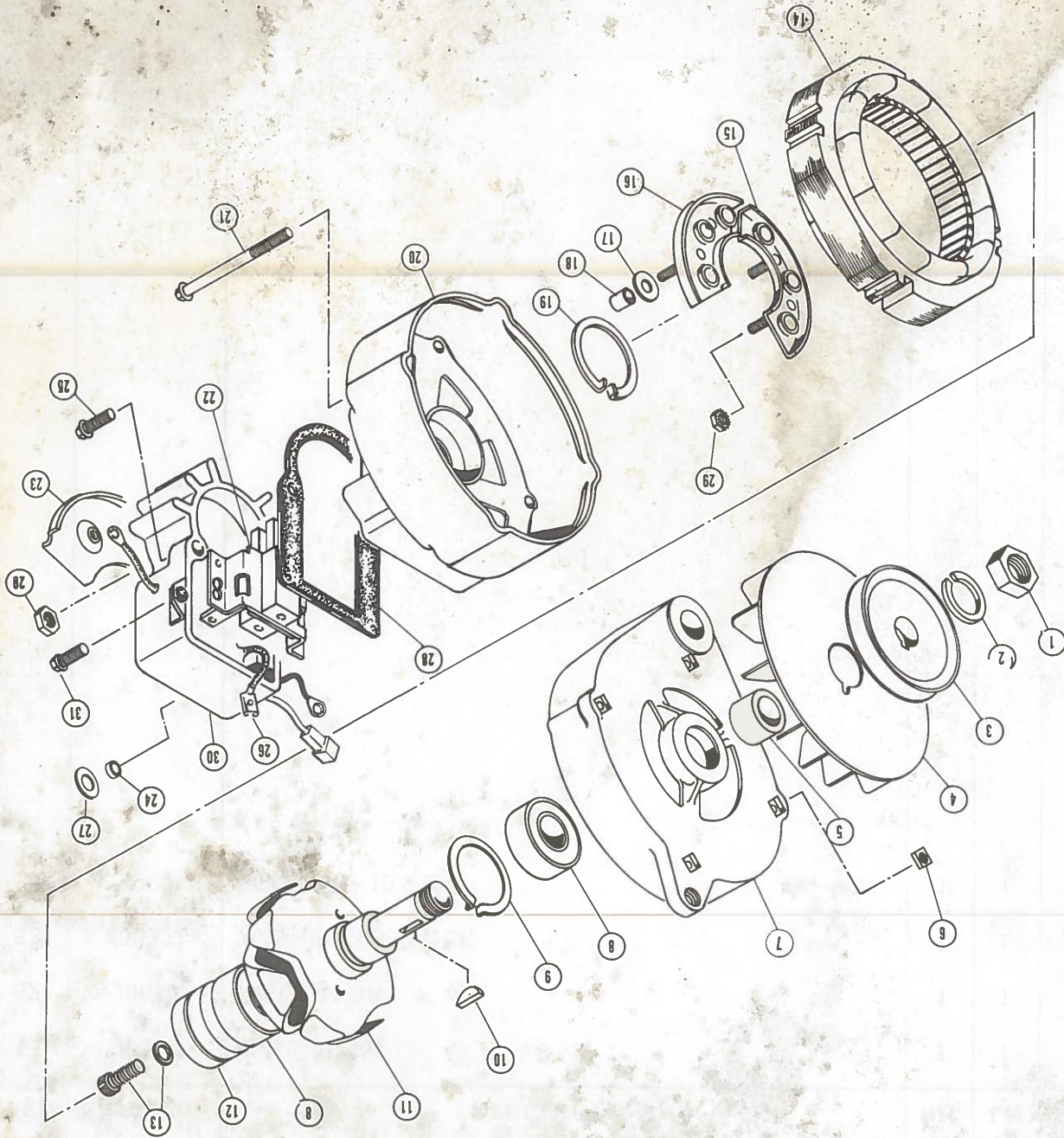
FIG. 15 ALTERNATOR ASSEMBLY EXTERNAL REGULATOR

QUANTITY	
305	
350	

ITEM	PART NO.	DESCRIPTION	RH	LH	RH	LH
51	96573	WIRE ASS'Y	1	1	1	1
52	39044	INSULATOR	1	1	1	1
53	103321	WASHER 3/8" LOCK	1	1	1	1
54	179837	BOLT 3/8 - 19 x 3/4	1	1	1	1



FIGURE 16





MARINE  
ENGINESPARTS  
CATALOG

FIG. 16 ALTERNATOR ASSEMBLY INTEGRAL REGULATOR

ITEM	PART NO.	DESCRIPTION	QUANTITY	
			RH	LH
1	39000	NUT	1	1
2	39001	WASHER	1	1
3	39039	PULLEY	1	1
4	707348	FAN	1	1
5	39005	SPACER	1	1
6	39006	NUT SQUARE # 10 - 32	4	4
7	39007	HOUSING, FRONT	1	1
8	39008	BEARING	2	2
9	39009	RETAINER, FRONT BEARING	1	1
10	39010	KEY	1	1
11	39011	ROTOR ASS'Y	1	1
12	39012	SLIP RING ASS'Y	1	1
13	39013	SCREW # 10 - 32 x 5/8"	1	1
14	39014	STATOR ASS'Y	1	1
15	39015	NEGATIVE DIODE ASS'Y	1	1
16	39016	POSITIVE DIODE ASS'Y	1	1
17	39017	WASHER	1	1
18	39018	INSULATOR	1	1
19	39019	RETAINER, REAR	1	1
20	39020	HOUSING	1	1
21	39021	SCREW # 10 - 32 x 2 55/64	1	1
22	39022	BRUSH ASS'Y	1	1
23	39023	DUAL DIODE ASS'Y	1	1
24	39024	INSULATOR	1	1
25	39025	BOLT # 10 - 24 x 3/4"	1	1



FIG. 16 ALTERNATOR ASSEMBLY INTEGRAL REGULATOR

QUANTITY

350

305

ITEM	PART NO.	DESCRIPTION	RH	LH	RH	LH
------	----------	-------------	----	----	----	----

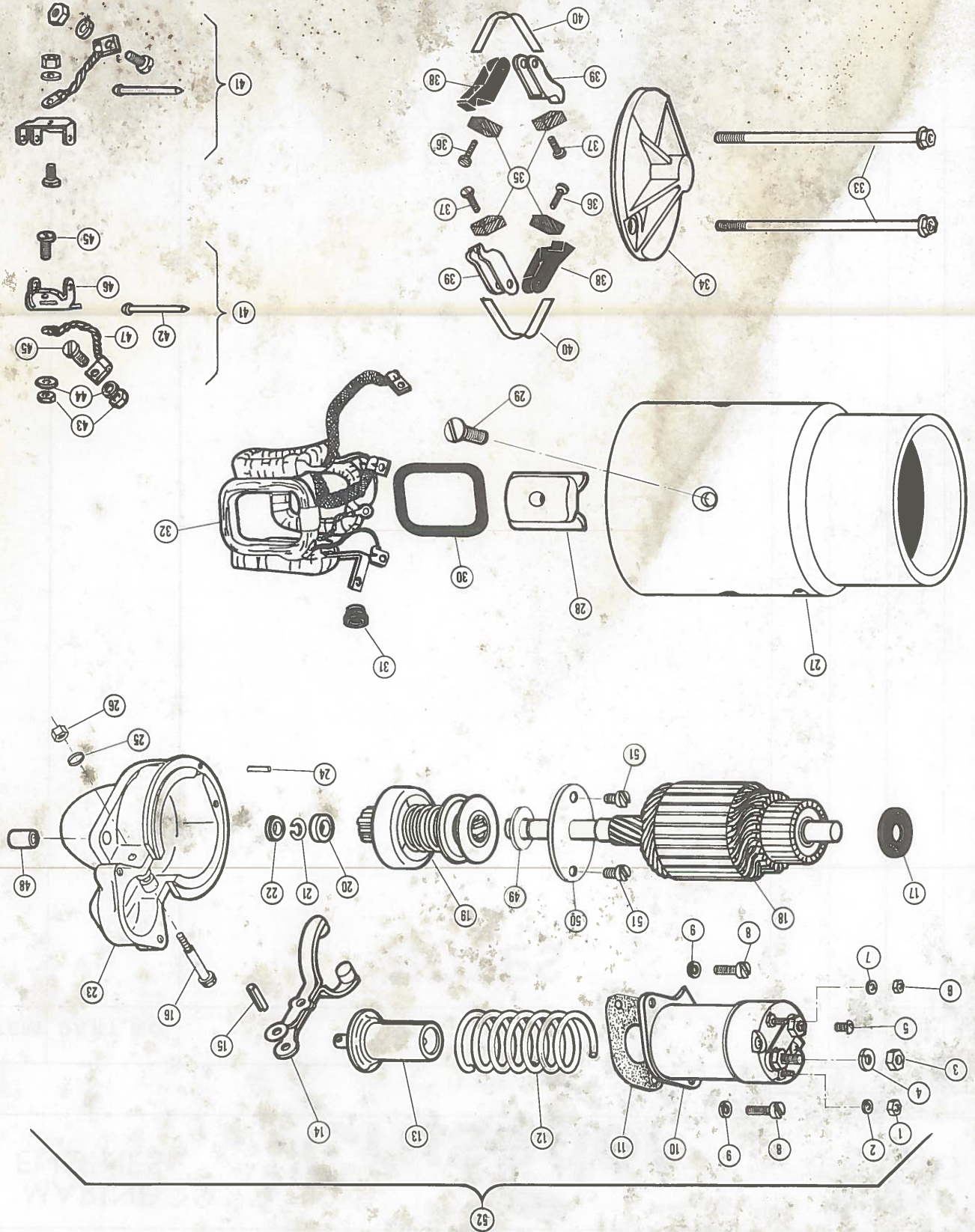
26	39026	WIRE ASS'Y	1	1	1	1
27	39027	WASHRE	1	1	1	1
28	39040	GASKET	1	1	1	1
29	39029	NUT #10 - 24	2	2	2	2
30	39050	VOLTAGE REGULATOR ASS'Y	1	1	1	1
31	39031	SCREW SELF TAPPING # 8 x 3/4"	2	2	2	2
32	39049	ALTERNATOR AND REGULATOR ASS'Y	1	1	1	1



<b>MARINE ENGINES</b>		 <b>Crusader</b>		<b>PARTS CATALOG</b>	
				<b>QUANTITY</b>	
		<b>305</b>		<b>350</b>	
<b>ITEM</b>	<b>PART NO.</b>	<b>DESCRIPTION</b>			
		<b>RH</b>	<b>LH</b>	<b>RH</b>	<b>LH</b>
<b>NOTES</b>					



FIGURE 17





MARINE  
ENGINESPARTS  
CATALOG

FIG. 17 STARTER ASSEMBLY

QUANTITY

305

350

ITEM	PART NO.	DESCRIPTION	RH	LH	RH	LH
1	112432	NUT #10 - 32	1	1	1	1
2	455348	WASHER #10	1	1	1	1
3	134570	NUT 3/8 - 16	1	1	1	1
4	454722	WASHER 3/8 LOCK	1	1	1	1
5	42071	SCREW	1	1	1	1
6	113103	NUT #8 - 32	1	1	1	1
7	455766	WASHER #8	1	1	1	1
8	42073	SCREW	2	2	2	2
9	42040	WASHER	2	2	2	2
10	42016	SOLENOID ASS'Y	1	1	1	1
11	42061	GASKET	1	1	1	1
12	42018	SPRING	1	1	1	1
13	42019	PLUNGER	1	1	1	1
14	42020	LEVER	1	1	1	1
15	455106	PIN	1	1	1	1
16	42022	BOLT	1	1	1	1
17	42048	WASHER	1	1	1	1
18	42080	ARMATURE	1	1	1	1
18	42081	ARMATURE	1	1	1	1
19	42036	DRIVE ASS'Y	1	1	1	1
19	42031	DRIVE ASS'Y	1	1	1	1
20	42012	COLLAR	1	1	1	1
21	42013	RING	1	1	1	1
22	42014	COLLAR	1	1	1	1
23	42032	HOUSING	1	1	1	1



ITEM	PART NO.	DESCRIPTION	RH	LH	RH	LH
24	42055	PIN	1	1	1	1
25	42039	WASHER	1	1	1	1
26	42042	NUT	1	1	1	1
27	42000	FRAME	1	1	1	1
28	42056	POLE SHOE	4	4	4	4
29	42046	SCREW POLE SHOE	4	4	4	4
30	42053	INSULATOR	4	4	4	4
31	42052	GRAMMET	1	1	1	1
32	42088	SHUNT COIL ASS'Y	1	1	1	1
32	42034	FIELD COIL ASS'Y		1		1
32	42028	FIELD COIL ASS'Y	1	1		
33	42049	BOLT	2	2	2	2
34	NSS	COMMUNATOR END CAP	—	—	—	—
35	42001	BRUSH	4	4	4	4
36	42043	SCREW	2	2	2	2
37	42043	SCREW	2	2	2	2
38	42002	BRUSH HOLDER GROUNDED	2	2	2	2
39	42003	BRUSH HOLDER INSULATED	2	2	2	2
40	42004	SPRING	2	2	2	2
41	42005	BRUSH HOLDER SUPPORT KIT	2	2	2	2
42	42054	PIN	2	2	2	2
43	120361	NUT # 10 - 24	2	2	2	2
44	453435	WASHER	2	2	2	2
45	274738	SCREW	2	2	2	2
46	NSS	BRACKET	—	—	—	—



# MARINE ENGINES



## PARTS CATALOG

FIG. 17 STARTER ASSEMBLY

QUANTITY

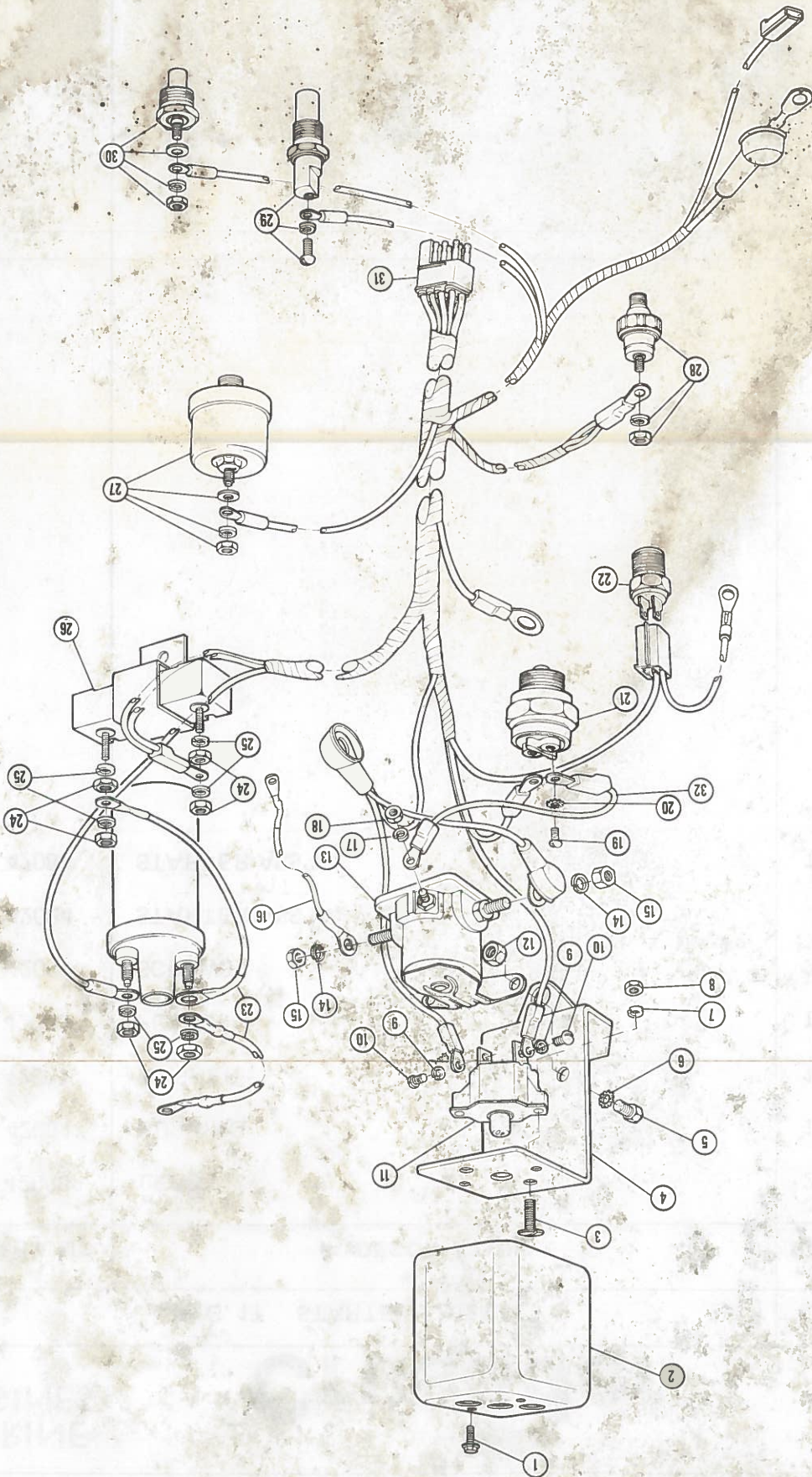
305

350

ITEM	PART NO.	DESCRIPTION	305		350	
			RH	LH	RH	LH
47	42006	LEAD	2	2	2	2
48	42051	BUSHING	1	1	1	1
49	42087	WASHER	1	1	1	1
50	42088	PLATE	1	1	1	1
51	42089	SCREWS	2	2	2	2
52	42084	STARTER ASS'Y	1	1	1	1
52	42083	STARTER ASS'Y	1	1	1	1



FIGURE 18





ITEM	PART NO.	DESCRIPTION	RH	LH	RH	LH
1	22140	SCREW #10 - 24 x 3/8" THREAD CUTTING COVER	2	2	2	2
2	97474		1	1	1	1
3	436734	SCREW #10 - 24 x 3/4"	2	2	2	2
4	97478	BRACKET	1	1	1	1
5	179791	BOLT 1/4 - 20 x 1/2	2	2	2	2
6	103319	WASHER 1/4" LOCK	2	2	2	2
7	120217	WASHER #10 LOCK	2	2	2	2
8	120361	NUT #10 - 24	2	2	2	2
9	120217	WASHER #10 LOCK	2	2	2	2
10	436728	SCREW #10 - 24 x 1/4	2	2	2	2
11	9006077	CIRCUIT BREAKER	1	1	1	1
12	109084	NUT 1/4 - 20	2	2	2	2
13	9006320	RELAY ASS'Y	1	1	1	1
14	103320	WASHER	2	2	2	2
15	102634	NUT 5/16 - 18	2	2	2	2
16	97479	WIRE RELAY TO STARTER SOLENOID	1	1	1	1
17	120217	WASHER #10 LOCK	2	2	2	2
18	120361	NUT #10 - 24	2	2	2	2
19	436728	SCREW #10 - 24 x 1/4"	2	2	2	2
20	120217	WASHER #10 LOCK	2	2	2	2
21	20171	NEUTRAL START SWITCH	1	1	1	1
22	21088	ALARM SENDER GEAR OIL TEMP.	1	1	1	1
23	97475	WIRE ASSEMBLY STARTER TO COIL & RESISTOR	1	1	1	1
24	120361	NUT #10 - 24	1	1	1	1
25	120217	WASHER #10 LOCK	1	1	1	1





FIG. 18 ENGINE WIRING

FIG. 18 ENGINE WIRING					
ITEM		PART NO.	DESCRIPTION		
26		41064	RESISTOR ASS'Y	1	1
27		700425	GAUGE SENDER ENGINE OIL PRESSURE SINGLE	1	1
27		700403	GAUGE SENDER ENGINE OIL PRESSURE DUAL	1	1
28		96399	ALARM SENDER ENGINE OIL PRESSURE	1	1
29		20326	ALARM SENDER ENGINE WATER TEMP	1	1
30		700427	GAUGE SENDER ENGINE WATER TEMP. SINGLE	1	1
30		727046	GAUGE SENDER ENGINE WATER TEMP. DUAL	1	1
31		97477	WIRING HARNESS UNIVERSAL	1	1
32		97480	WIRE SAFETY SWITCH TO RELAY	1	1
33		20640	ALARM BUZZER	1	1
34		97423	SPARK PLUG WIRE SET	1	1
35		97454	SPARK PLUG WIRE RADIO SUPPRESSION	1	1
			305	350	
			RH	LH	
			RH	LH	
			RH	LH	
			RH	LH	
			RH	LH	
			RH	LH	
			RH	LH	
			RH	LH	
			RH	LH	
			RH	LH	
			RH	LH	
			RH	LH	
			RH	LH	
			RH	LH	
			RH	LH	
			RH	LH	
			RH	LH	
			RH	LH	
			RH	LH	
			RH	LH	
			RH	LH	
			RH	LH	
			RH	LH	
			RH	LH	
			RH	LH	
			RH	LH	
			RH	LH	
			RH	LH	
			RH	LH	
			RH	LH	
			RH	LH	
			RH	LH	
			RH	LH	
			RH	LH	
			RH	LH	
			RH	LH	
			RH	LH	
			RH	LH	
			RH	LH	
			RH	LH	
			RH	LH	
			RH	LH	
			RH	LH	
			RH	LH	
			RH	LH	
			RH	LH	
			RH	LH	
			RH	LH	
			RH	LH	
			RH	LH	
			RH	LH	
			RH	LH	
			RH	LH	
			RH	LH	
			RH	LH	
			RH	LH	
			RH	LH	
			RH	LH	
			RH	LH	
			RH	LH	
			RH	LH	
			RH	LH	
			RH	LH	
			RH	LH	
			RH	LH	
			RH	LH	
			RH	LH	
			RH	LH	
			RH	LH	
			RH	LH	
			RH	LH	
			RH	LH	
			RH	LH	
			RH	LH	
			RH	LH	
			RH	LH	
			RH	LH	
			RH	LH	
			RH	LH	
			RH	LH	
			RH	LH	
			RH	LH	
			RH	LH	
			RH	LH	
			RH	LH	
			RH	LH	
			RH	LH	
			RH	LH	
			RH	LH	
			RH	LH	
			RH	LH	
			RH	LH	
			RH	LH	
			RH	LH	
			RH	LH	
			RH	LH	
			RH	LH	
			RH	LH	
			RH	LH	
			RH	LH	
			RH	LH	
			RH	LH	
			RH	LH	
			RH	LH	
			RH	LH	
			RH	LH	
			RH	LH	
			RH	LH	
			RH	LH	
			RH	LH	
			RH	LH	
			RH	LH	
			RH	LH	
			RH	LH	
			RH	LH	
			RH	LH	
			RH	LH	
			RH	LH	
			RH	LH	
			RH	LH	
			RH	LH	
			RH	LH	
			RH	LH	
			RH	LH	
			RH	LH	
			RH	LH	
			RH	LH	
			RH	LH	
			RH	LH	
			RH	LH	
			RH	LH	
			RH	LH	
			RH	LH	
			RH	LH	
			RH	LH	
			RH	LH	
			RH	LH	
			RH	LH	
			RH	LH	
			RH	LH	
			RH	LH	
			RH	LH	
			RH	LH	
			RH	LH	
			RH	LH	
			RH	LH	
			RH	LH	
			RH	LH	
			RH	LH	
			RH	LH	
			RH	LH	
			RH	LH	
			RH	LH	
			RH	LH	
			RH	LH	
			RH	LH	
			RH	LH	
			RH	LH	
			RH	LH	
			RH	LH	
			RH	LH	
			RH	LH	
			RH	LH	
			RH	LH	
			RH	LH	
			RH	LH	
			RH	LH	
			RH	LH	
			RH	LH	
			RH	LH	
			RH	LH	
			RH	LH	
			RH	LH	
			RH	LH	
			RH	LH	
			RH	LH	
			RH	LH	
			RH	LH	
			RH	LH	
			RH	LH	
			RH	LH	
			RH	LH	
			RH	LH	
			RH	LH	
			RH	LH	




MARINE ENGINES		 <b>Crusader</b>		PARTS CATALOG	
		QUANTITY		305	350
ITEM	PART NO.	DESCRIPTION		RH	LH
NOTES					



FIGURE 19

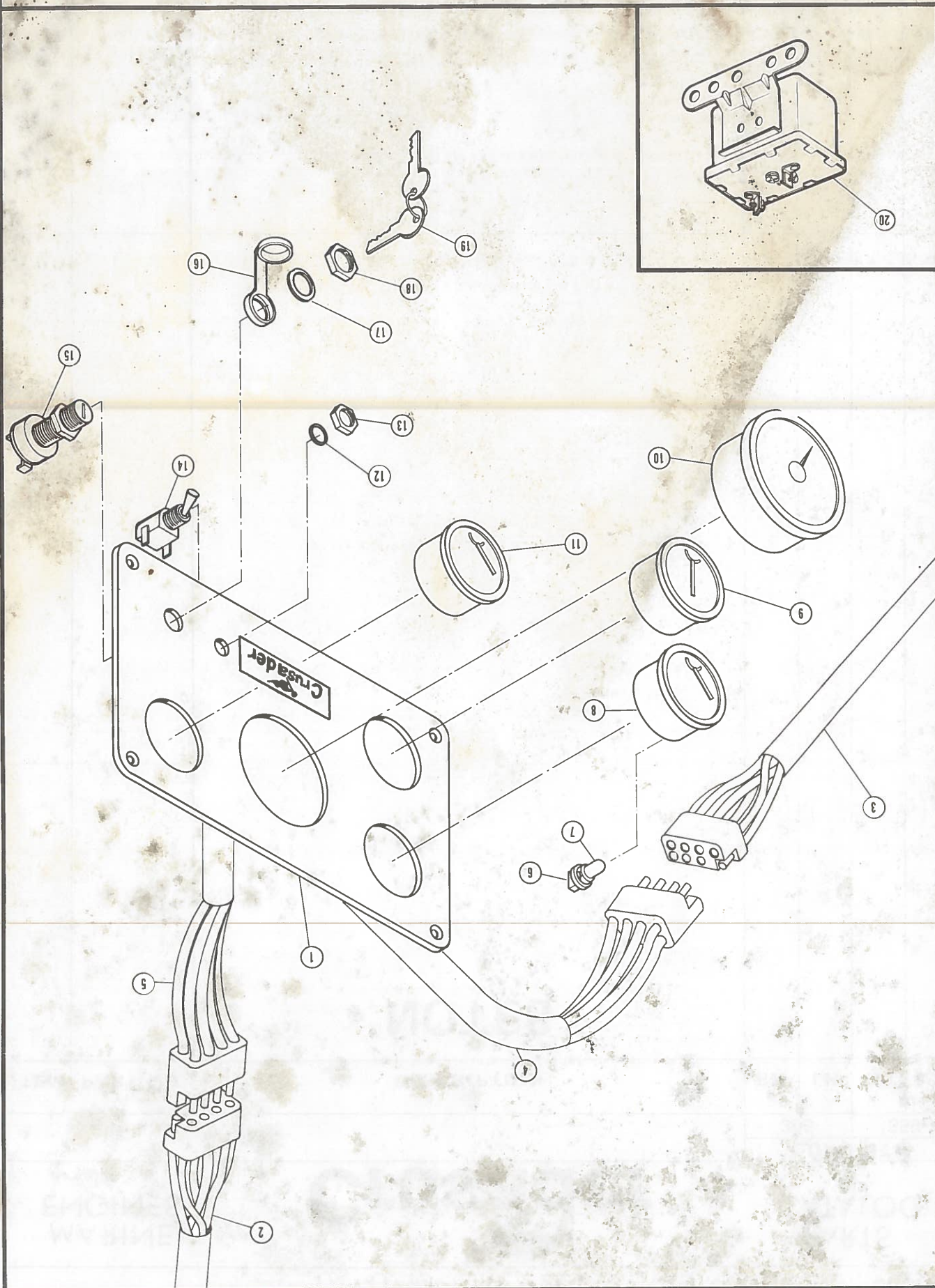




FIG. 19 INSTRUMENT PANEL ASSEMBLY

ITEM	PART NO.	DESCRIPTION	QUANTITY			
			RH	LH	RH	LH
1	1020946	PANEL, INST. MTG. SINGLE 4 GAUGES	1	1	1	1
1	1020947	PANEL, INST. MTG. SINGLE 3 GAUGES	AR	AR	AR	AR
1	1020948	PANEL, INST. MTG. DUAL 8 GAUGES	1	1	1	1
1	1020949	PANEL, INST. MTG. DUAL 6 GAUGES	AR	AR	AR	AR
2	97494	HARNESSEXTENSION UPPER TO LOWER STATION	AR	AR	AR	AR
3	97344	HARNESSEX. UPPER TO LOWER STATION 20 FT.	AR	AR	AR	AR
3	97354	HARNESSEX. UPPER TO LOWER STATION 25 FT.	AR	AR	AR	AR
4	1020956	PIGTAIL ASS'Y PANEL TO ENGINE	1	1	1	1
5	1020955	PIGTAIL ASS'Y UPPER TO LOWER STATION	AR	AR	AR	AR
6	1020940	SOCKET AND LAMP ASS'Y	4	4	4	4
7	NSS	LAMP	—	—	—	—
8	1020944	WATER TEMPERATURE GAUGE F.C.B. NOTE 1	AR	AR	AR	AR
8	1020952	WATER TEMPERATURE GAUGE R.C.B. NOTE 1	AR	AR	AR	AR
8	1020958	WATER TEMPERATURE GAUGE R.B.B. NOTE 1	1	1	1	1
9	1020943	AMPMETER F.C.B.	AR	AR	AR	AR
9	1020951	AMPMETER R.C.B.	AR	AR	AR	AR
9	1020957	AMPMETER R.B.B.	1	1	1	1
9	1020954	VOLTMETER R.B.B.	1	1	1	1
10	1020945	TACHOMETER F.C.B.	AR	AR	AR	AR
10	1020953	TACHOMETER R.C.B.	AR	AR	AR	AR
10	1020960	TACHOMETER R.B.B.	1	1	1	1
11	1020942	OIL PRESSURE GAUGE F.C.B.	AR	AR	AR	AR
11	1020950	OIL PRESSURE GAUGE R.C.B.	AR	AR	AR	AR
11	1020959	OIL RESSURE GAUGE R.B.B.	1	1	1	1
12	NSS	WASHER	—	—	—	—





FIG. 19 INSTRUMENT PANEL ASSEMBLY

QUANTITY

305

350

ITEM	PART NO.	DESCRIPTION	RH	LH	RH	LH
13	NSS	NUT	—	—	—	—
14	1020939	SWITCH INSTRUMENTS LIGHTS	1	1	1	1
15	1020938	IGNITION SWITCH ASS'Y	1	1	1	1
16	1020941	CAP	1	1	1	1
17	NSS	WASHER	—	—	—	—
18	NSS	NUT	—	—	—	—
19	NSS	KEY	—	—	—	—
20	20640	ALARM BUZZER	—	—	—	—
21	97490	INSTRUMENT PANEL ASS'Y SINGLE LOWER NOTE 2	AR	AR	AR	AR
21	97491	INSTRUMENT PANEL ASS'Y SINGLE UPPER NOTE 2	AR	AR	AR	AR
21	97492	INSTRUMENT PANEL ASS'Y DUAL LOWER NOTE 2	AR	AR	AR	AR
21	97493	INSTRUMENT PANEL ASS'Y DUAL UPPER NOTE 2	AR	AR	AR	AR
22	20175	ALARM KIT	—	—	—	—
NOTE 1		ABBREVIATIONS:				
		F.C.B. FLAT CHROME BEZEL				
		R.C.B. RAISED CHROME BEZEL				
		R.B.B. RAISED BLACK BEZEL				
		CAUTION ! AMPMETERS AND VOLTMETERS				
		ARE NOT INTERCHANGEABLE				
NOTE 2		COMPLETE INSTRUMENT PANELS ARE FURNISHED				
		WITH VOLTMETERS. FOR USE ON AN AMPMETER				
		TYPE APPLICATION CONTACT CRUSADER MARINE				
		PARTS DEPT.				




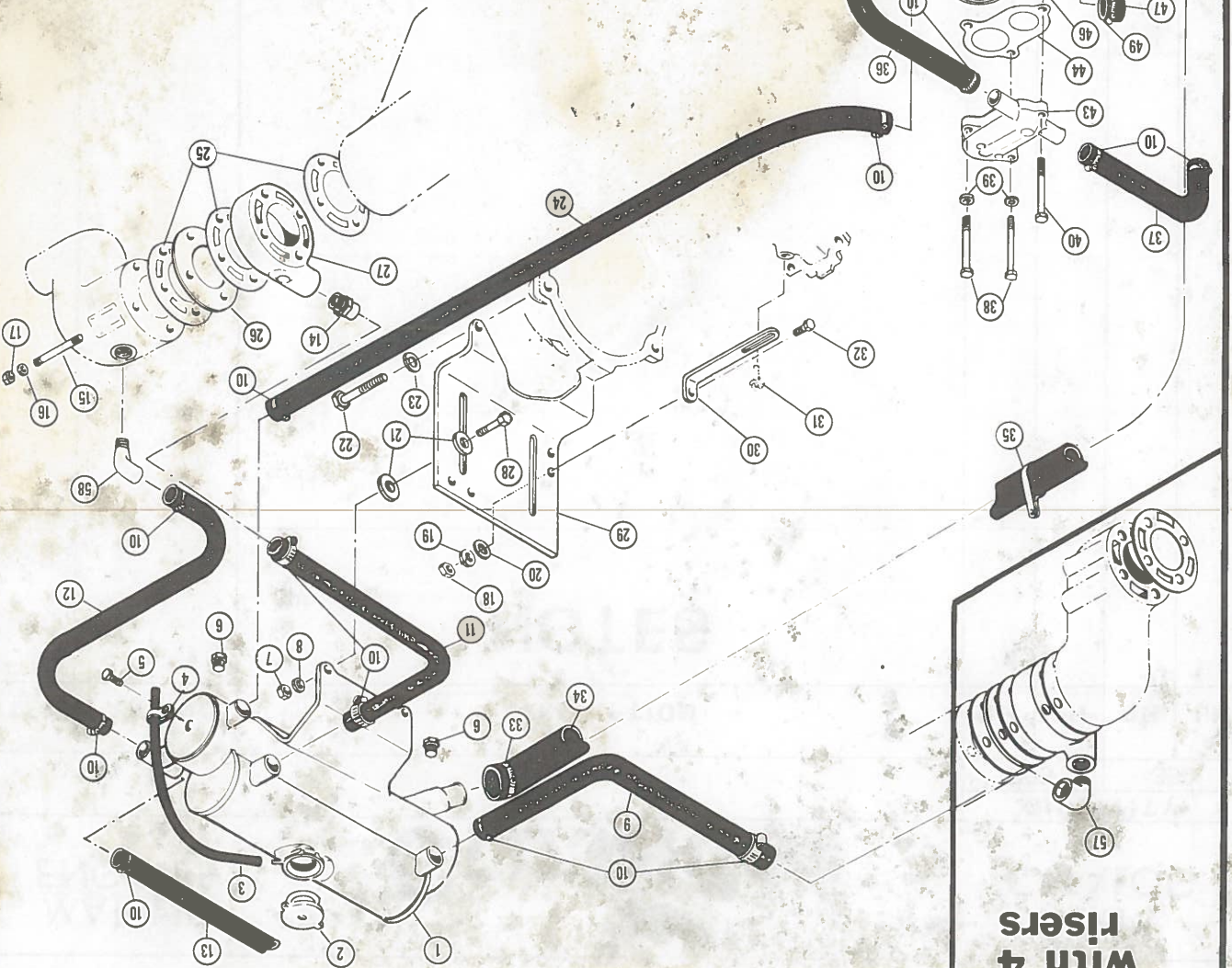
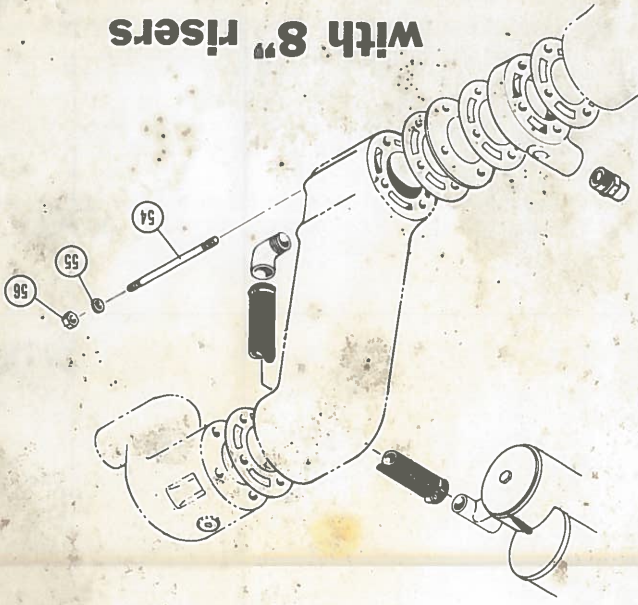
MARINE ENGINES		 <b>Crusader</b>		PARTS CATALOG	
				QUANTITY	
305		350			
ITEM	PART NO.	DESCRIPTION		RH	LH
NOTES				RH	LH
				RH	LH
				RH	LH
				RH	LH



FIGURE 20

With 8" risers



With 4" risers