

FIG. 20 FRESHWATER COOLING FULL SYSTEM

QUANTITY

305

350

ITEM	PART NO.	DESCRIPTION	RH	LH	RH	LH
1	97433	HEAT EXCHANGER ASS'Y	1	1	1	1
2	22027	PRESSURE CAP	1	1	1	1
3	20237	OVERFLOW HOSE	1	1	1	1
4	2000147	CLAMP	1	1	1	1
5	174695	BOLT 3/16 - 16 x 5/8"	2	2	2	2
6	127950	PLUG 1/8 N.P.T.	1	1	1	1
7	271500	NUT 7/16 - 14				
8	103322	WASHER 7/16 LOCK				
9	23073	HOSE 1 1/4" x 19"				
10	20227	HOSE CLAMP 16				
11	23073	HOSE 1 1/4" x 17" Note 1				
12	23071	HOSE 1" x 30" Note 1				
13	23070	HOSE 1" x 18" Note 1				
14	96760	ADAPTER				
15	96369	STUD S.S.				
16	103321	WASHER 3/8 LOCK				
17	102635	NUT 3/8 - 16				
18	102635	NUT 3/8 - 16				
19	103321	WASHER LOCK				
20	103341	WASHER 3/8 FLAT				
21	33189	WASHER SPECIAL				
22	179843	BOLT 3/8 - 16 x 1 1/2				
23	103321	WASHER 3/8 LOCK				
24	23074	HOSE 1 - 1/4 x 63"				
25	96108	GASKET				

FIG. 20 FRESH WATER COOLING FULL SYSTEM

QUANTITY
305 350

ITEM	PART NO.	DESCRIPTION	RH	LH	RH	LH
26	97296	BLOCK OFF PLATE				
27	97295	WATER OUTLET ADAPTER				
28	179862	BOLT 7/16 - 14 x 1 1/2				
29	97308	BRACKET HEAT EXCHANGER MOUNTING				
30	97309	BRACKET SUPPORT				
31	179840	BOLT				
32	179841	BOLT 3/8 - 16 x 1 1/4				
33	20230	CLAMP # 28				
34	23075	HOSE 1 3/4" x 44"				
35	97347	HOSE SUPPORT CLAMP				
36	23025	HOSE				
37	23025	HOSE				
38	186285	BOLT 3/8 - 16 x 4"				
39	103321	WASHER 3/8 LOCK				
40	186282	BOLT 3/8 - 16 x 3 1/4				
41	103321	WASHER 3/8 LOCK				
42	102635	NUT 3/8 - 16				
43	96101	COVER STAT. HSG.				
44	97361	GASKET THERMOSTAT HSG.				
45	96358	THERMOSTAT 160°				
46	97436	RESTRICTOR				
47	96519	CAP				
48	97311	CAP				
49	20230	CLAMP # 28				
50	20228	CLAMP # 20				

FIG. 20 FRESHWATER COOLING FULL SYSTEM

ITEM	PART NO.	DESCRIPTION	QUANTITY			
			RH	LH	RH	LH
51	96102	THERMOSTAT HSG.				
52	444588	PLUG 1/2 NPT				
53	96105	STAT. HSG. GASKET				
54	22032	STUD S.S.				
55	116103	WASHER FLAT SEALING				
56	20472	NUT SELF LOCKING				
57	30530	ELBOW 90°				
58	727003	ELBOW 90° 3/4 NPT				
59	23099	FRESH WATER COOLING FULL SYSTEM KIT				
9	22147	HOSE 1 - 1/4" x 32"				
11	22147	HOSE 1 - 1/4" x 32"				
12	22145	HOSE 1" x 44"				
13	22149	HOSE 1" x 54"				
36	22151	HOSE 1 - 1/4" x 33"				
37	22151	HOSE 1 - 1/4" x 33"				
NOTE 1						
FOR REVERSED MANIFOLDS						

FIGURE 21

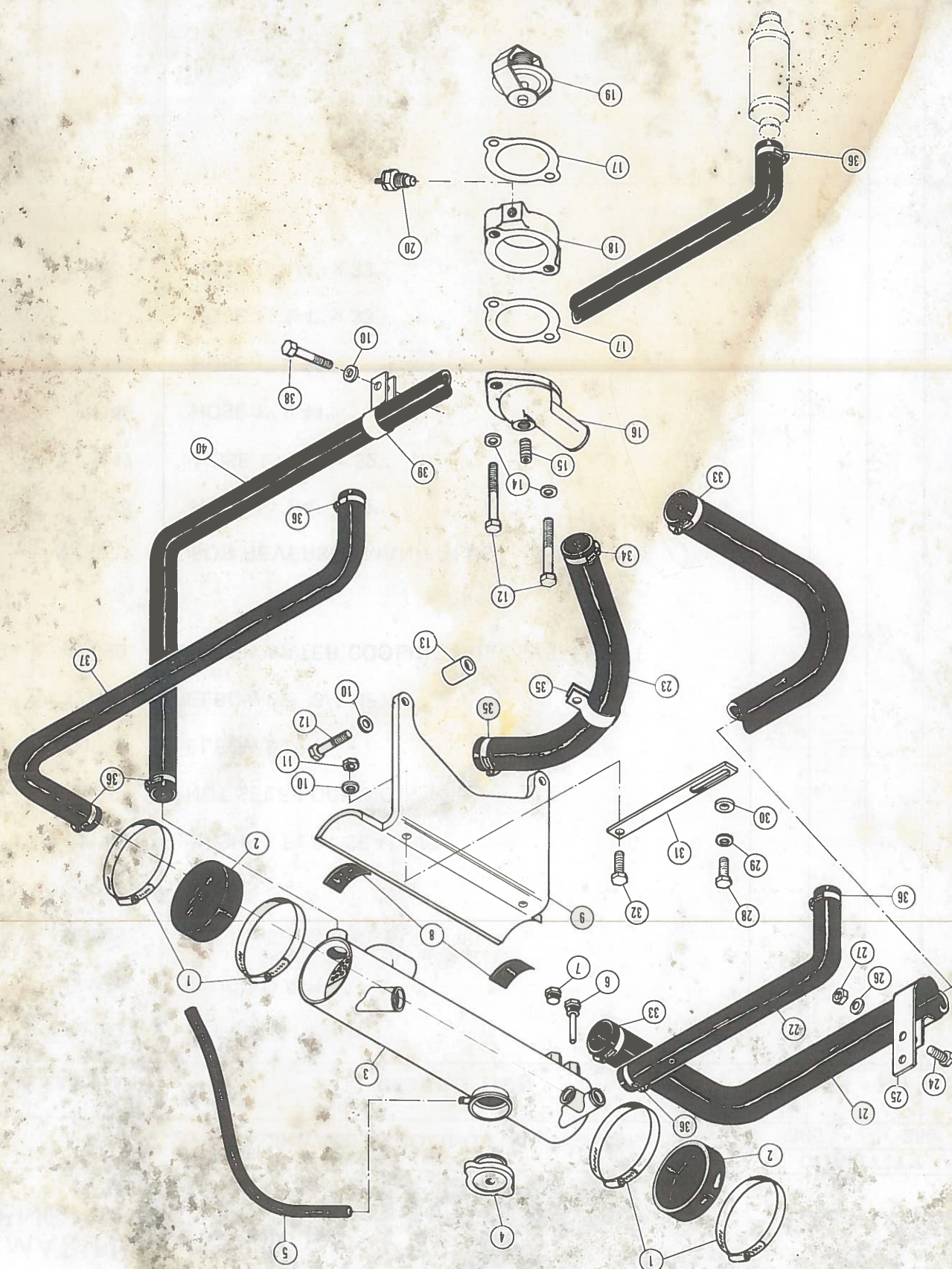


FIG. 21 FRESH WATER COOLING HALF SYSTEM REAR

QUANTITY

305

350

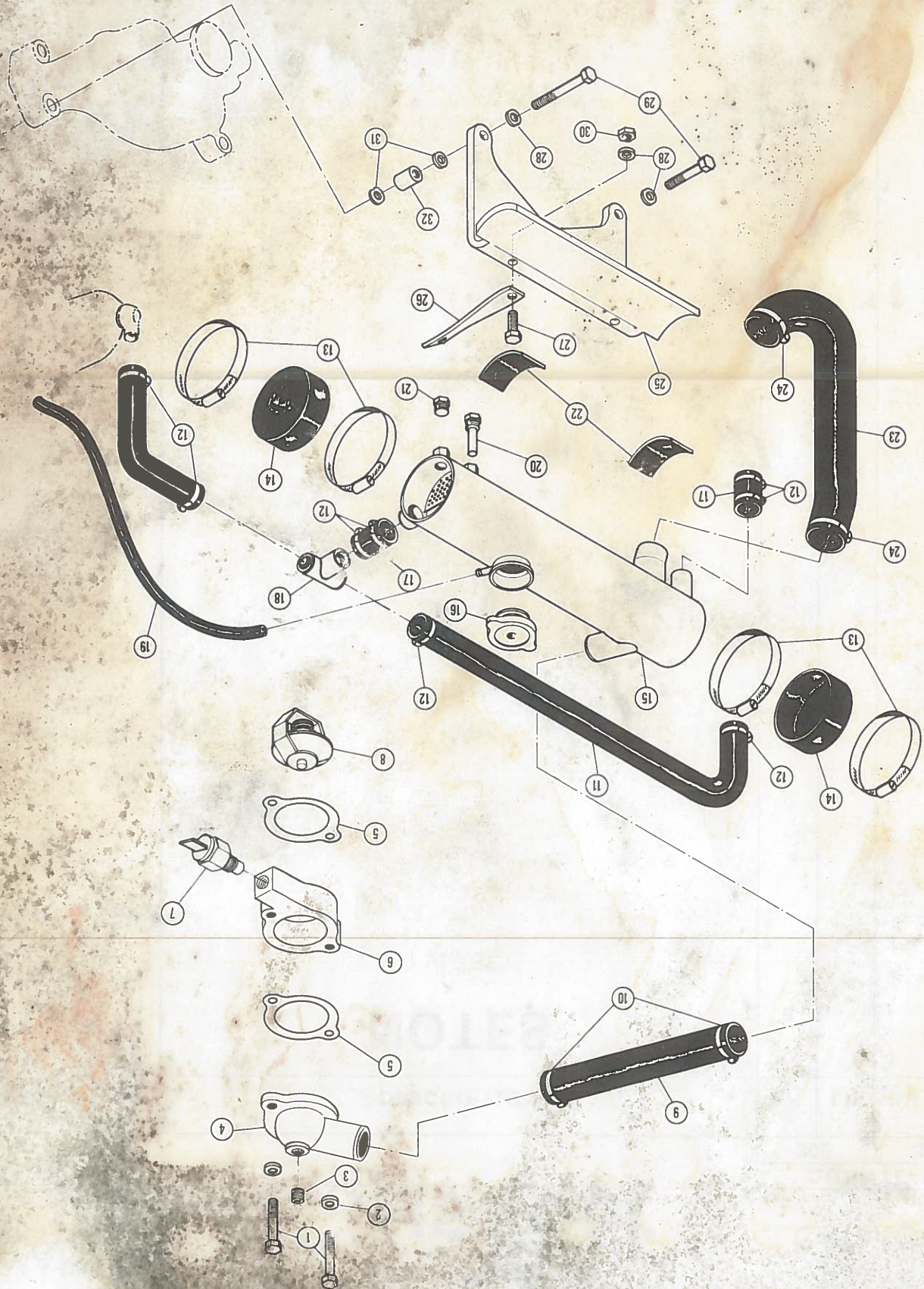
ITEM	PART NO.	DESCRIPTION	RH	LH	RH	LH
1	22096	CLAMP	4	4	4	4
2	23064	END CAP	2	2	2	2
3	97402	HEAT EXCHANGER	1	1	1	1
4	22027	CAP, FILLER	1	1	1	1
5	23065	OVERFLOW HOSE	1	1	1	1
6	10335	ZINC ELECTRODE	1	1	1	1
7	127951	PLUG 1/4 NPT	1	1	1	1
8	96790	RUBBER PAD	2	2	2	2
9	97404	MOUNTING BRACKET	1	1	1	1
10	103321	WASHER 3/8 LOCK	4	4	4	4
11	102635	NUT 3/8 - 16	1	1	1	1
12	179849	BOLT 3/8 - 16 x 2 1/2	2	2	2	2
13	97123	SPACER	2	2	2	2
14	103321	WASHER 3/8 LOCK	2	2	2	2
15	444705	PLUG	1	1	1	1
16	96357	THERMOSTAT HSG.	1	1	1	1
17	96105	GASKET THERMOSTAT HSG.	2	2	2	2
18	97452	SPACER	1	1	1	1
19	96358	THERMOSTAT 160%	1	1	1	1
20	21088	ALARM SENDER	1	1	1	1
21	23048	HOSE 1 - 3/4" x 52"	1	1	1	1
22	23044	HOSE 1 - 1/4" x 26" Note 1	1	1	1	1
23	23047	HOSE 1 - 1/2" x 38 1/2"	1	1	1	1
24	179795	BOLT 1/4 - 20 x 3/4"	1	1	1	1
25	97347	SUPPORT	1	1	1	1

FIG. 21		FRESH WATER COOLING HALF SYSTEM REAR		QUANTITY	
				305	350

ITEM	PART NO.	DESCRIPTION	RH	LH	RH	LH
26	103319	WASHER 1/4 LOCK	1	1	1	1
27	109084	NUT 1/4 - 20	1	1	1	1
28	179816	BOLT 5/16 - 18 x 3/4	1	1	1	1
29	103320	WASHER 5/16 LOCK	1	1	1	1
30	446362	WASHER 5/16 FLAT	1	1	1	1
31	707494	BRACE	1	1	1	1
32	179839	BOLT 3/18 - 16 x 1"	1	1	1	1
33	20230	CLAMP #28	2	2	2	2
34	20229	CLAMP #24	2	2	2	2
35	2000245	SUPPORT	1	1	1	1
36	20228	CLAMP #20	6	6	6	6
37	23046	HOSE 1 1/4 x 41" Note 1	1	1	1	1
38	186289	BOLT 3/8 - 16 x 5	1	1	1	1
39	2000285	SUPPORT	1	1	1	1
40	23046	HOSE 1 1/4" x 55"	1	1	1	1
41	23043	KIT, FRESH WATER COOLING 1/2 REAR MTD.	AR	AR	AR	AR
NOTE 1		FOR REVISED MANIFOLDS				
22	23025	HOSE 1 - 1/4" x 13"				
37	20992	HOSE 1 - 1/4" x 25"				

MARINE ENGINES		 Crusader		PARTS CATALOG	
				QUANTITY	
				305	350
ITEM	PART NO.	DESCRIPTION			
		RH	LH	RH	LH
		NOTES			

FIGURE 22



MARINE ENGINES



PARTS CATALOG

FIG. 22 FRESHWATER COOLING HALF SYSTEM FRONT MTD.

QUANTITY

305

350

ITEM	PART NO.	DESCRIPTION	RH	LH	RH	LH
1	179845	BOLT 3/8 - 16 x 1 - 3/4"	2	2	2	2
2	103321	WASHER	2	2	2	2
3	444705	PLUG	1	1	1	1
4	96357	THERMOSTAT HSG.	1	1	1	1
5	96105	THERMOSTAT GASKET	2	2	2	2
6	97198	SPACER	1	1	1	1
7	21088	ALARM SENDER WATER TEMP.	1	1	1	1
8	96358	THERMOSTAT 160°	1	1	1	1
9	23069	HOSE 1 - 1/2 x 21 - 1/2	1	1	1	1
10	20229	CLAMP # 24	2	2	2	2
11	23059	HOSE 1 - 1/4 x 22"	1	1	1	1
12	20228	CLAMP # 20	8	8	8	8
13	22096	CLAMP	4	4	4	4
14	23064	END CAP	2	2	2	2
15	97371	HEAT EXCHANGER	1	1	1	1
16	22027	CAP, FILLER	1	1	1	1
17	23060	HOSE 1 - 1/4 x 3"	2	2	2	2
18	30559	TEE	1	1	1	1
19	23065	HOSE, OVERFLOW	1	1	1	1
20	10335	ZINC ELECTRODE	1	1	1	1
21	127951	PLUG 1/4 NPT	1	1	1	1
22	96790	PAD MOUNTING	2	2	2	2
23	96323	HOSE FORMED	1	1	1	1
24	20230	CLAMP # 28	2	2	2	2
25	97404	MOUNTING BRACKET	1	1	1	1

FIG. 22 FRESH WATER COOLING HALF SYSTEM FRONT MTD.

QUANTITY
305

350

ITEM	PART NO.	DESCRIPTION	RH	LH	QUANTITY
26	97429	BRACE	1	1	1
27	179837	BOLT 3/8 - 16 x 3/4"	1	1	1
28	103321	WASHER 3/8 LOCK	3	3	3
29	179851	BOLT 3/8 - 16 x 3"	1	1	1
30	102635	NUT 3/8 - 16	1	1	1
31	116103	WASHER FLAT	2	2	2
32	96943	SPACER	1	1	1
33	22064	KIT FRESH WATER COOLING 1/2, FRONT MTD.	AR	AR	AR